

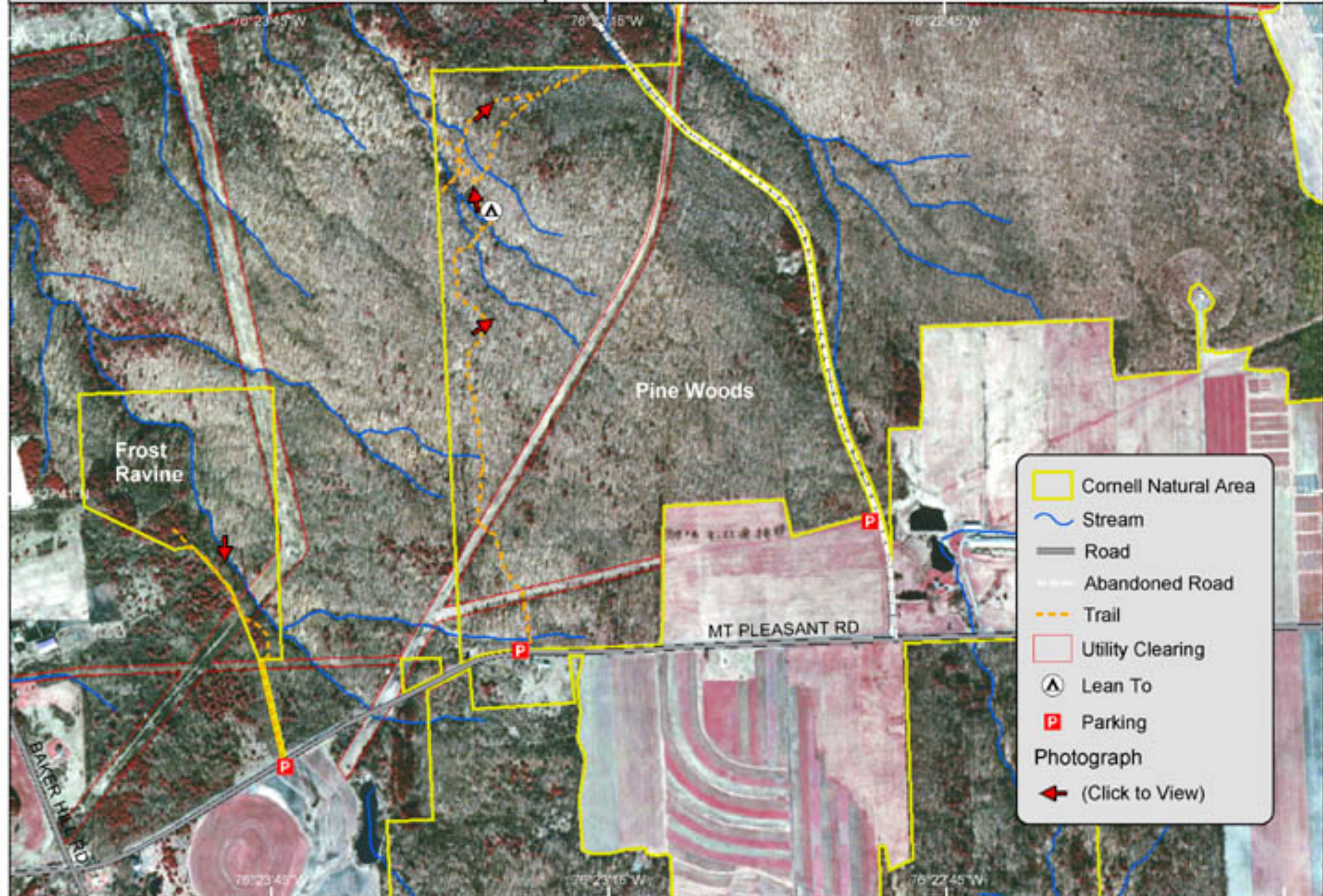
# Mount Pleasant

Aerial Photo (USGS 1995)

Map Updated 04/04/03  
0 250 500 1,000 1,500 Feet



Comell Plantations  
Natural Areas Program  
ph: (607) 255-9638



- Cornell Natural Area
- Stream
- Road
- Abandoned Road
- Trail
- Utility Clearing
- Lean To
- Parking
- Photograph
- (Click to View)

Data Sources: USFWS (NWI), USGS, Tompkins County Planning Dept., and Comell Plantations.