

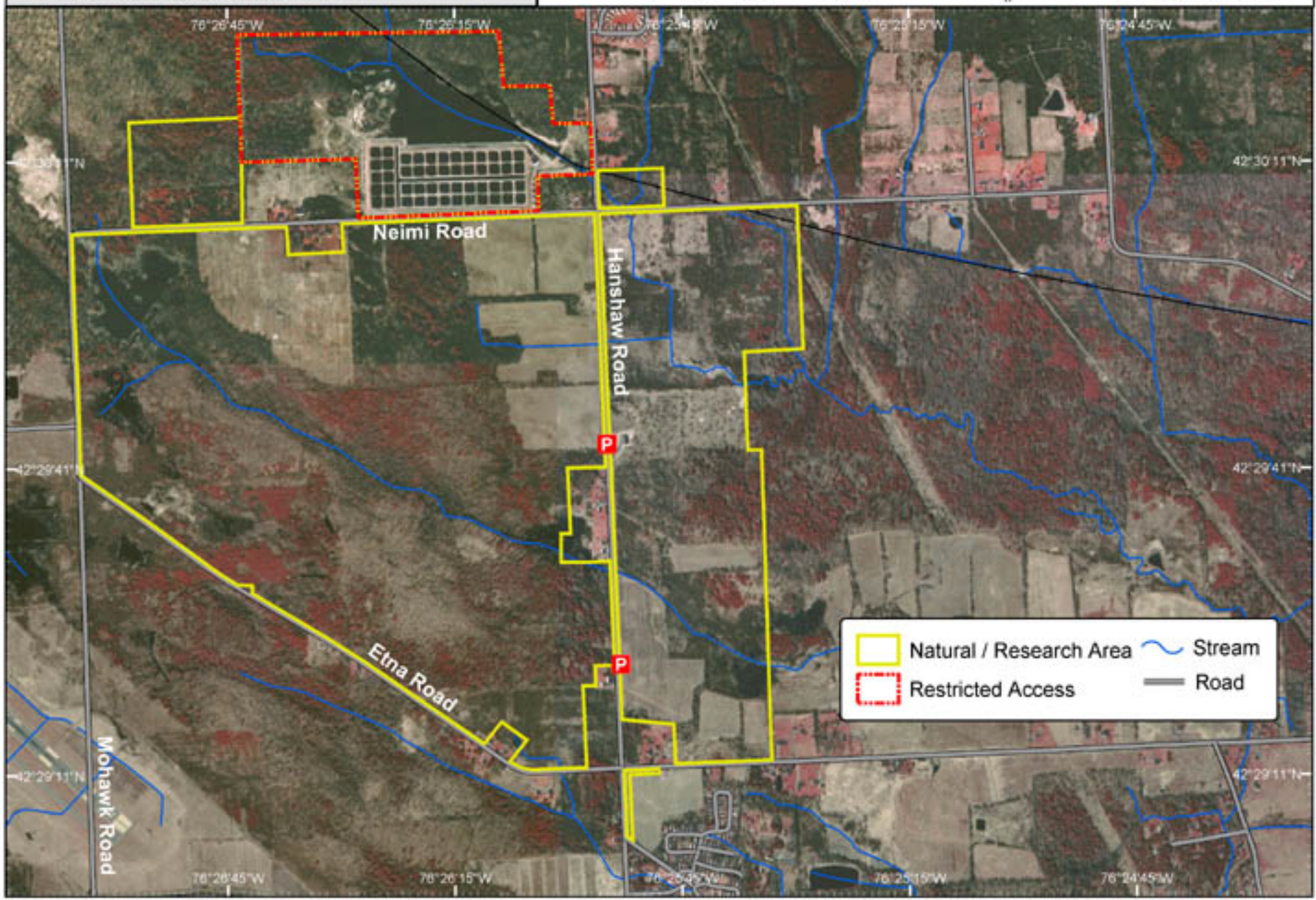
Etna Fringed Gentian Area




Aerial Photo (USGS 1995)

Map Updated 03/20/03
0 500 1,000 2,000 Feet



Cornell Plantations
Natural Areas Program
ph: (607) 255-9638



	Natural / Research Area		Stream
	Restricted Access		Road

Data Sources: USFWS (NWI), USGS, Tompkins County Planning Dept., and Cornell Plantations.